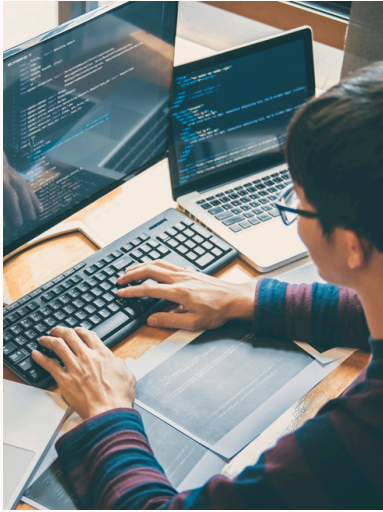




## Our various features

**MES software for Glulam production**  
and **custom** IT solutions

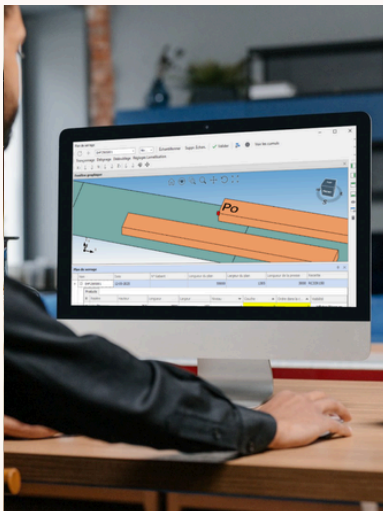
[www.wood-manager.be](http://www.wood-manager.be)



## Custom Developments Tailored to Your Production

Wood Manager develops features based on the specific needs of each company to ensure smooth and efficient integration into existing production processes.

---



## Project and Phase Management

Easily create, archive, and manage your projects and phases. Export your data to Excel and import projects directly from IFC files for smooth integration with your design software.

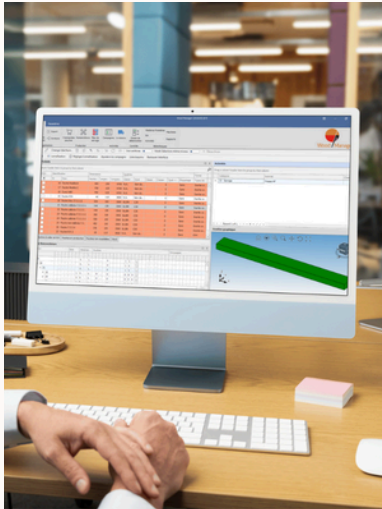
---



## Beam Order Management

Add, modify, or duplicate your orders with ease, and save time thanks to automatic imports from Excel or IFC files.

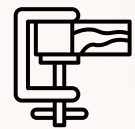
---



## Bill of Materials Management

Effectively manage your products and automate lamination to optimize your production, ensuring optimal material usage and precise tracking at every stage.

---



## Clamping Plan Management

Organize your production according to clamping plans, mastering the main bottleneck in glulam production to ensure a smooth, uninterrupted workflow.

---



## Raw Material and Inventory Management

Track your material inflows and outflows precisely, optimize your stock levels and procurement based on the real needs of production.

---





## Activity and Resource Management

Plan and monitor your production activities, efficiently allocating your human and machine resources to maximize industrial performance.

---



## Quality Control

Ensure your products' compliance with rigorous traceability tools, manage delamination samples according to the EN14080 standard, and confidently monitor your certification processes.

---



## Reports and Labels

Generate detailed reports, print labels for perfect traceability, and automatically issue machine orders for your equipment.

---





## Connection to Your ERP System

Link your production data with your ERP and financial systems, ensuring synchronization and seamless management of your operations across your entire organization.

---



## Contact Management

Centralize and organize all your client, supplier, and partner records for simple, structured follow-up connected to your projects.

---